

# Mini Market In Derby For Sale

Derby, Derbyshire, United Kingdom

£45,000



The Business Partnership are pleased to offer this Off Licence & General store for sale. (Leasehold). Includes: 3 bedrooms, Lounge, kitchen, Bathroom. Ground Floor – front retail area approximately 750 sq feet)

Double fronted unit, counter and a wide variety of display racking and shelving for general grocery, BWS, cards and news. Includes CCTV system, variety of cooler cabinets and ice cream freezer.

To the rear of the retail area is a Store and Toilet plus access to rear yard.

PRICE REDUCED FOR QUICKER SALE

## LOCATION

The business is located on a main road in a busy and well-established retail and residential suburb of Derby. The position of the property ensures the store's visibility from a wide area, and allows for passing trade as well as established custom.

## FINANCE AVAILABLE

If you need help or advice with financing a business and property purchase, please let us know and we will put you in touch with our Finance Specialists who can help to fund the purchase of these types of businesses/property.

## THE BUSINESS PARTNERSHIP

Derbyshire, Nottinghamshire, Sth  
Staffs, NW Leics

Eastwood House

Derbyshire

DE23 6BN

01332 348 268 & 01509 856

0870 136 3512

Email: [derby@business-partnership.com](mailto:derby@business-partnership.com)

## FINANCIAL DETAILS

### Asking Price

£45,000

### Sales Revenue

£286,000

### Net Profit

Undisclosed

### Furniture / Fixtures Value

Undisclosed

### Inventory / Stock Value

Undisclosed

## GENERAL DETAILS

### Employees

Vendor with occasional assistance from part time staff

### Trading Hours

Monday to Sunday 10.00 am – 10.00 pm

### Relocatable

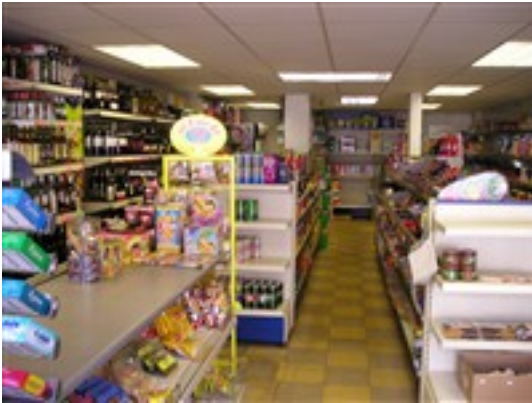
This business can be relocated

### Property

Leasehold

### Terms of Lease

Leasehold. A new lease will be granted on terms to be agreed.



## THE BUSINESS PARTNERSHIP

Derbyshire, Nottinghamshire, Sth  
Staffs, NW Leics  
Eastwood House  
Derbyshire  
DE23 6BN  
01332 348 268 & 01509 856  
0870 136 3512  
Email: [derby@business-partnership.com](mailto:derby@business-partnership.com)

### FINANCIAL DETAILS

#### Asking Price

£45,000

#### Sales Revenue

£286,000

#### Net Profit

Undisclosed

#### Furniture / Fixtures Value

Undisclosed

#### Inventory / Stock Value

Undisclosed

### GENERAL DETAILS

#### Employees

Vendor with occasional assistance from  
part time staff

#### Trading Hours

Monday to Sunday 10.00 am – 10.00 pm

#### Relocatable

This business can be relocated

#### Property

Leasehold

#### Terms of Lease

Leasehold. A new lease will be granted on  
terms to be agreed.